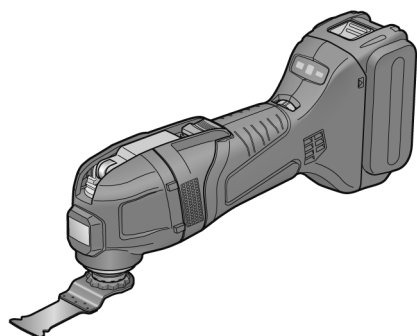


Service Manual

Cordless Multi-Tool

Model No. EY46A5

Europe



WARNING

This service information is designed for experienced repair technicians only and is not designed for use by the general public. It does not contain warnings or cautions to advise non-technical individuals of potential dangers in attempting to service a product. Products powered by electricity should be serviced or repaired only by experienced professional technicians. Any attempt to service or repair the product or products dealt with in this service information by anyone else could result in serious injury or death.

IMPORTANT SAFETY NOTICE


There are special components used in this equipment which are important for safety. These parts are marked by  in the Schematic Diagrams, Circuit Board Diagrams, Exploded Views and Replacement Parts List. It is essential that these critical parts should be replaced with manufacturer's specified parts to prevent shock, fire or other hazards. Do not modify the original design without permission of manufacturer.

TABLE OF CONTENTS

	PAGE	PAGE
1 Warning-----	2	
2 Specifications -----	2	
3 Troubleshooting Guide-----	2	
4 Disassembly and Assembly Instructions -----	4	
5 Exploded View and Replacement Parts List -----	8	

1 Warning

Caution:

- Pb free solder has a higher melting point than standard solder; Typically the melting point is 50 - 70 °F (30 - 40 °C) higher. Please use a soldering iron with temperature control and adjust it to 750 ± 20 °F (400 ± 10 °C). In case of using high temperature soldering iron, please be careful not to heat too long.
- Pb free solder will tend to splash when heated too high (about 1100°F / 600 °C).

2 Specifications

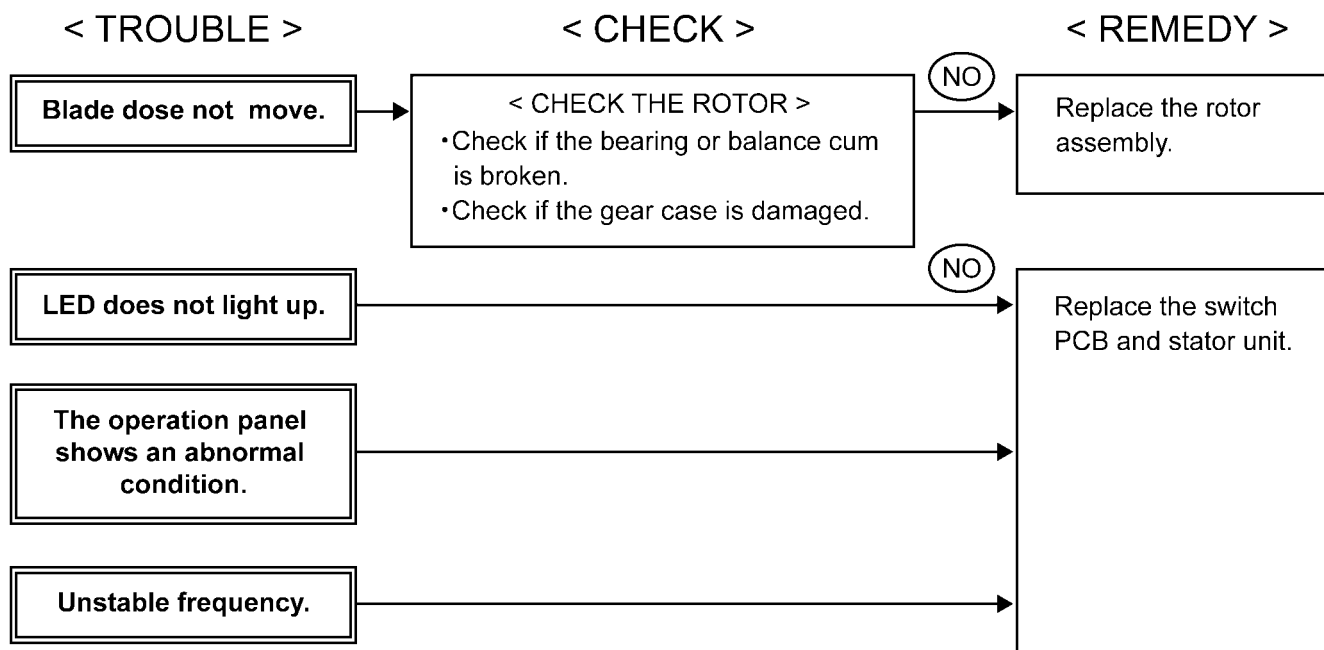
[Main unit]

Model No.		EY46A5	
Motor voltage		14.4 V DC	18 V DC
Oscillation speed (No load)		6000 – 18000 min ⁻¹	6000 – 20000 min ⁻¹
Oscillation angle		3 degrees	
Applicable Blade type		OIS / STARLOCK	
Overall length		261 mm (Main unit only)	
Weight With battery pack:	EY9L45	1.85 kg	—
	EY9L47	1.65 kg	—
	EY9L51	—	2.00 kg
	EY9L52	—	1.75 kg
	EY9L53	—	1.75 kg
	EY9L54	—	2.00 kg

3 Troubleshooting Guide

3.1. Troubleshooting Guide

Check the battery voltage before the inspection.



3.2. Trial Operation (after checking Troubleshooting Guide).

3.2.1. Assembly

- Confirm if there is no gap between housing A and B by pinching lead wires.
- Check that the frequency adjustment dial can be adjusted from 1 to 6.
- Mount the blade release lever to the main unit, and confirm that the fixing bolt is securely tightened.
- Set the switch to the ON position, and make sure the main unit becomes locked.

3.2.2. Operation

- With the switch (switch lever) set to the ON position, install the battery pack. Check that the indicator lamp for On lock start prevention function blinks, and confirm that the blade does not operate.
- Check whether the LED lights ON.
- Check if the unit generates heat abnormally in the short period.
- Check that the frequency can be adjusted by turning the frequency adjustment dial.

3.2.3. Integrity

- With the switch activated, shake the tool back and forth and up and down and verify that its sound does not change excessively.
- Check for the presence of any dirt or foreign matter from the repair process on the outside of the tool.

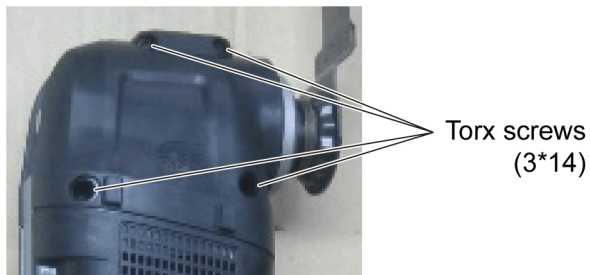
4 Disassembly and Assembly Instructions

* To reduce the risk of injury, always remove battery pack before removing/installing the tool.

* To assemble the tool, start with 8 and proceed to 1.

4.1. Disassembly

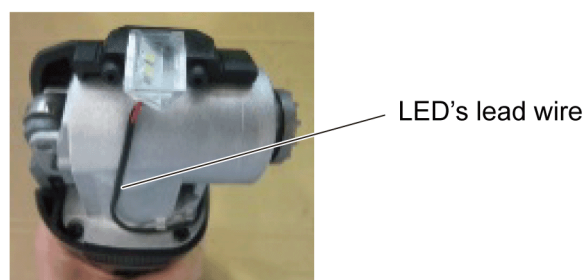
1. Remove 4 torx screws.



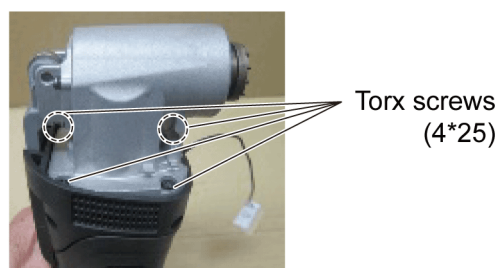
2. Remove the cover.

Note: (When Assembling)

Pay attention to avoid pinching of lead wires.



3. Remove the read wires and then remove 4 torx screws.



4. Pull out the gear case unit upward.

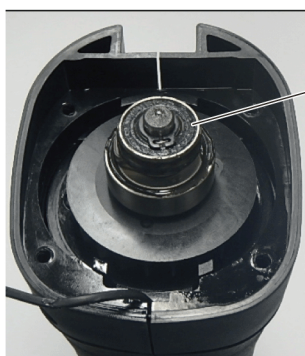
Note: (When Disassembling)

The rotor assembly is attached to the stator side due to magnetic force.

Note: (When Assembling)

Apply grease to the inside of the gear case.



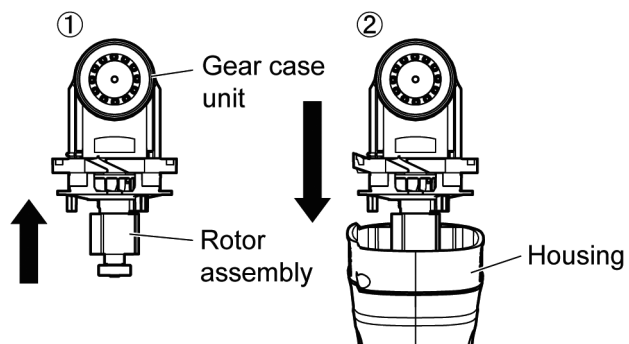


Rotor assembly

5. Remove the rotor assembly.

Note: (When Assembling)

Mount the rotor assembly to the gear case unit, and then install them to the stator.



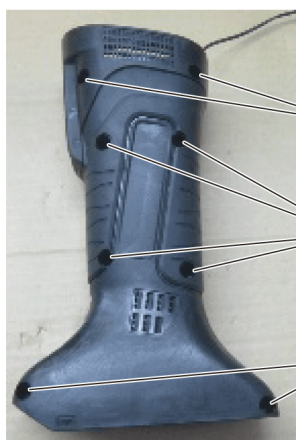
6. Remove the fan cover.



Note: (When Assembling)

The protruding part on the fan cover must be placed on lead wire side.

7. Remove 8 torx screws and take the housing B up vertically.

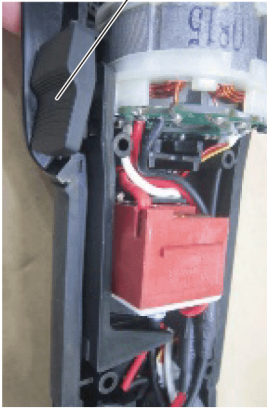


Torx screws(3.5*15)

Torx screws(3.5*15)

Torx screws(3.5*15)

Switch knob

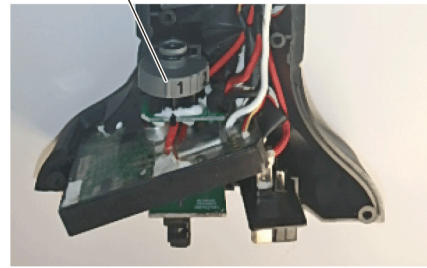


8. Remove the switch nob and display plate from the housing.

Note: (When Assembling)

Set the frequency adjustment dial at "6".

Frequency adjustment dial



Correct



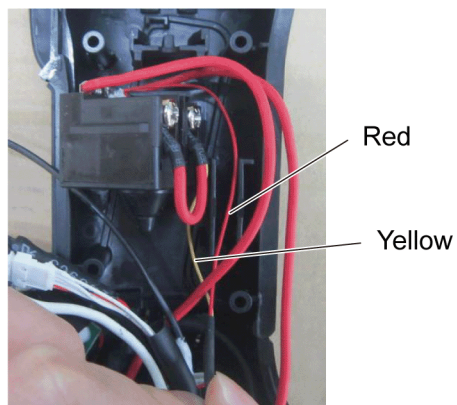
Set the dial at "6".

Wrong

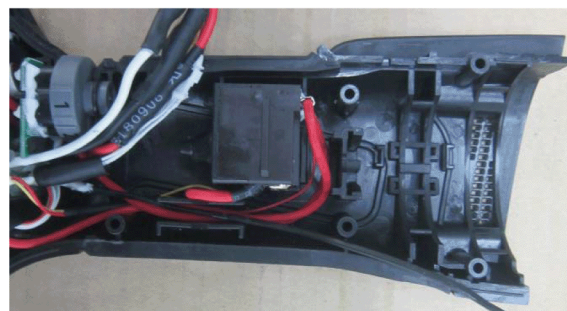
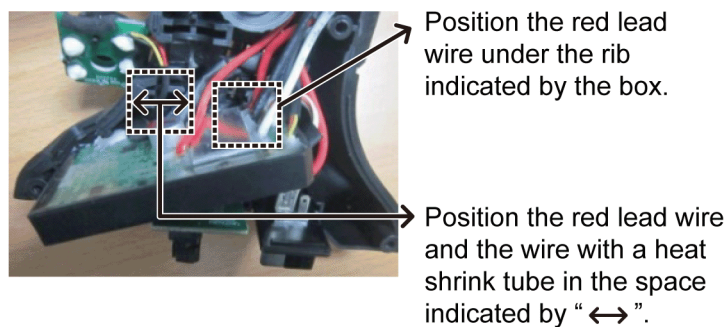


The dial is not in the right position.

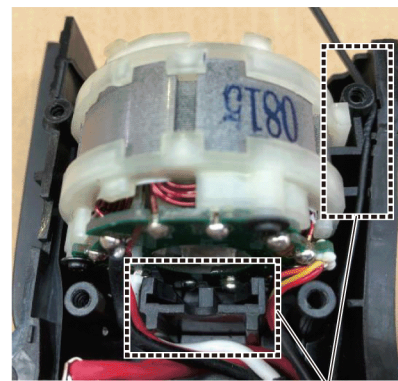
4.2. Wiring and Assembly Points



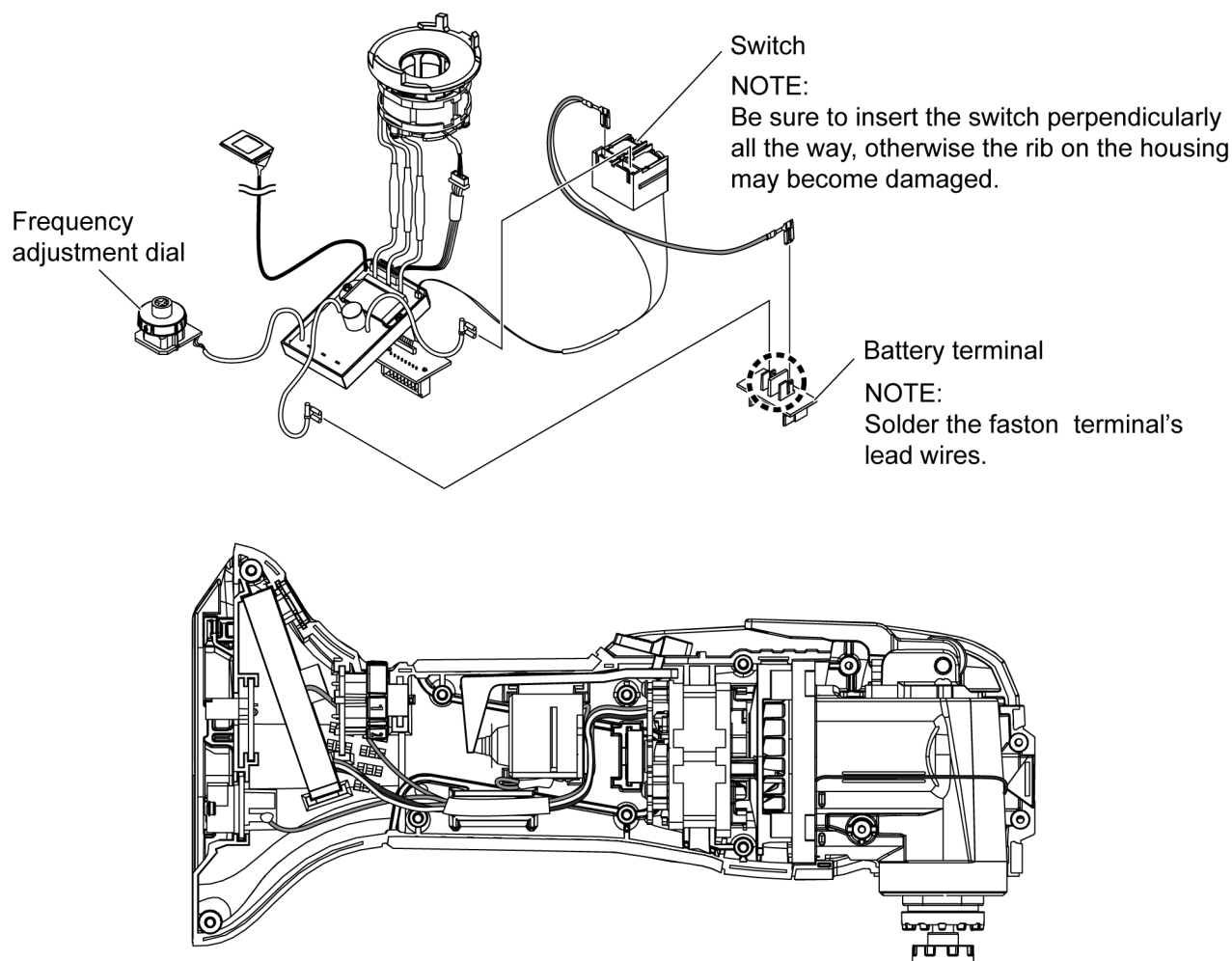
Route the thin lead wires (red, yellow) like the above picture.



Position the LED lead wire above the switch.

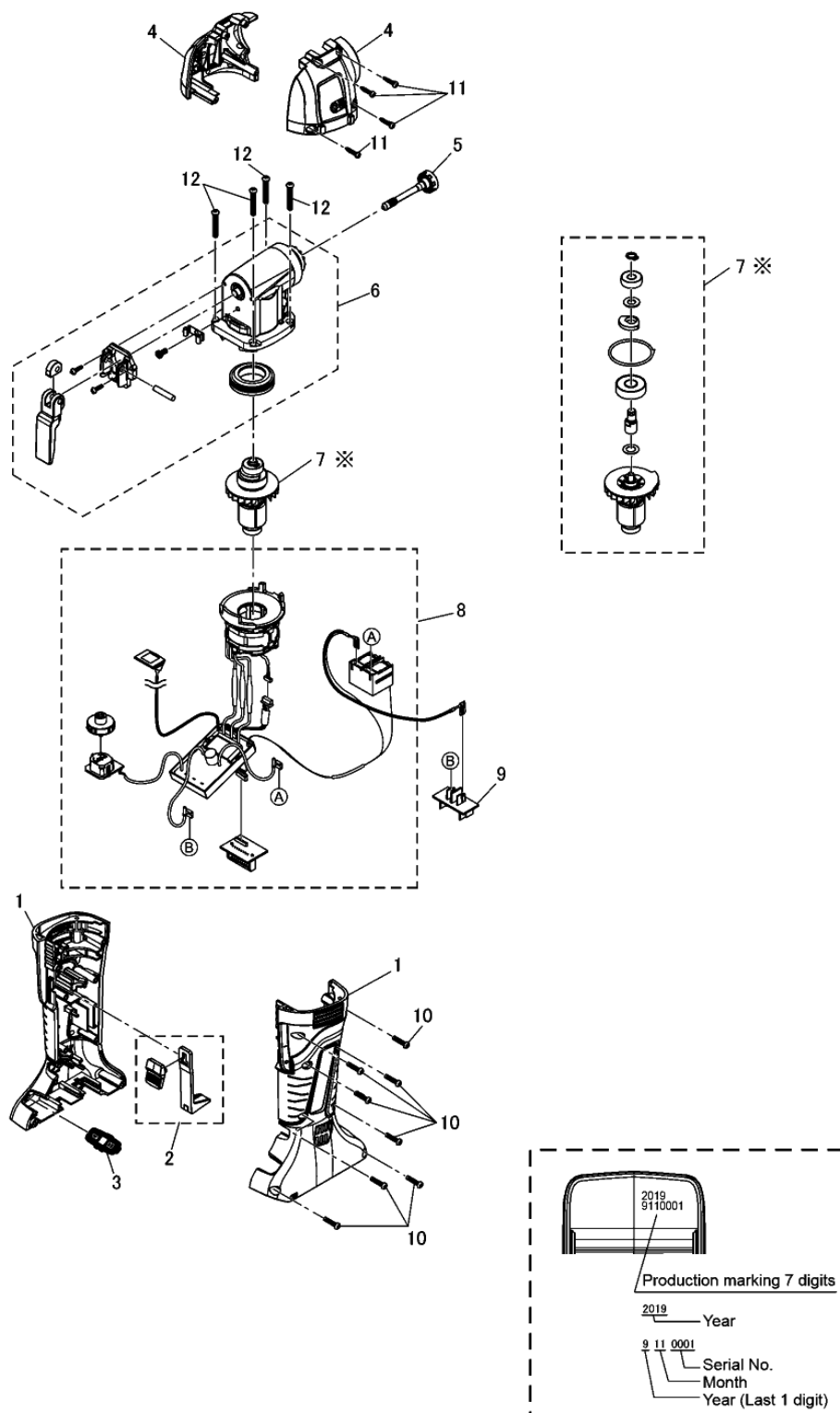


Verify that the lead wires are not pinched.



5 Exploded View and Replacement Parts List

Model No. : EY46A5 Exploded View



Model No. : EY46A5 Parts List

Change	Safety	Ref. No.	Part No.	Part Name & Description	Q'ty	Remarks
		1	WEY46A5K3102	HOUSING AB SET	1	
		2	WEY46A5K3201	BLADE RELEASE LEVER SET	1	
		3	WEY46A5K3301	DISPLAY PLATE	1	
		4	WEY46A5K3401	HEAD COVER AB SET	1	
		5	WEY46A5L0101	FIXING BOLT	1	
		6	WEY46A5L1201	GEAR CASE UNIT	1	
		7	WEY46A5L1301	ROTOR ASSEMBLY	1	
		8	WEY46A5L2101	SWITCH PCB AND STATOR UNIT	1	
		9	WEY7540L2157	BATTERY TERMINAL BLOCK	1	
		10	WEY46A5K6201	TORX SCREW	8	(3.5*15), (5PCS/PK)
		11	WEY46A5K6301	TORX SCREW	4	(3*14), (5PCS/PK)
		12	WEY46A5K6401	TORX SCREW	4	(4*25), (5PCS/PK)
		-	WEY46A5K8108	OPERATING INSTRUCTIONS	1	
		-	WEY6705X5527	SUNLIGHT GREASE	1	